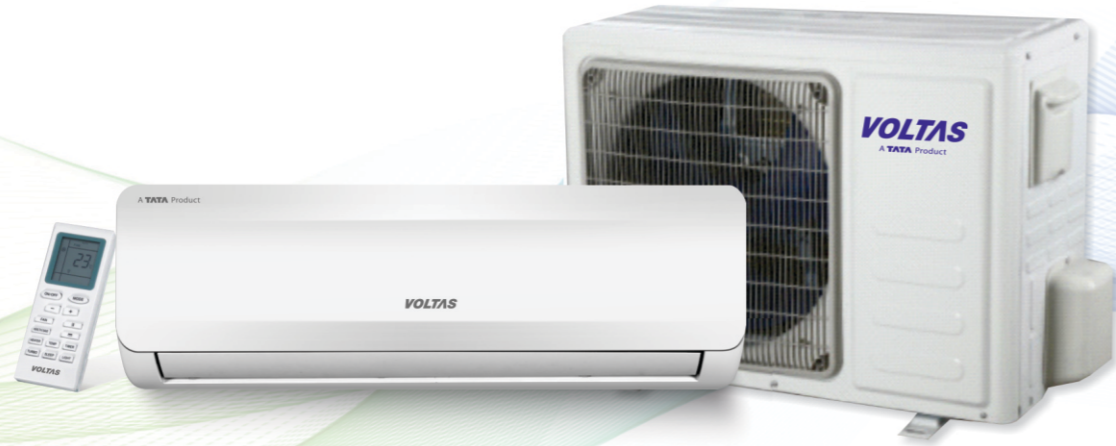


A TATA Product

فولتاس  
**VOLTAS**

بيقيك باردا  
**KEEPING YOU COOL**  
innovations to chill with



**COOLING AND AIR CONDITIONING EXPERTISE,**  
VOLTAS CONSISTENTLY BRINGS YOU RELIABLE PERFORMANCE



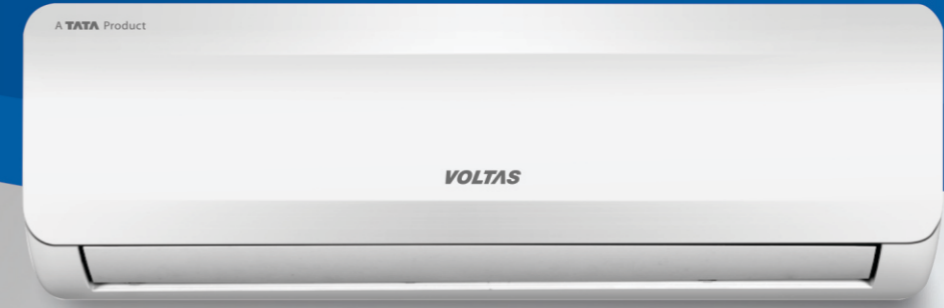
AUTHORISED DISTRIBUTOR:

الكندي للإلكترونيات  
AL GHANDI ELECTRONICS

P. O. BOX 9098, Dubai, UAE | Tel. 04 2570007 / 2310372  
Email : mda@alghandielelectronics.ae | www.alghandielelectronics.com

A TATA Product

فولتاس  
**VOLTAS**



**Bring Home All-Year  
Comfort And Convenience.**

*Steady Cooling. Steady Savings.  
Complete Peace of Mind.*



جميع الأحوال الجوية فولتاس

**VOLTAS** all weather™

INDIA'S  
**NO.1**  
AC BRAND™

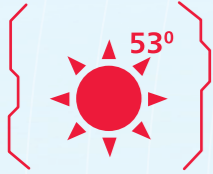


# قادة في تكنولوجيا تكييف الهواء

## Leaders in AC Technology

Reasons to choose Voltas Air Conditioner

**VOLTAS**  
**AIR CONDITIONER**



**HIGH AMBIENT COOLING**

Give you instant cooling



**ACTIVE DEHUMIDIFIER**

Senses the indoor humidity and controls it in monsoon.



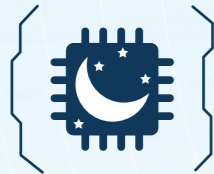
**INSTANT COOLING**

Turbo mode cools the room instantly.



**100% COPPER**

Copper condenser coil is more durable & delivers efficient cooling



**SLEEP MODE**

4 different modes which adjust to your sleep requirements



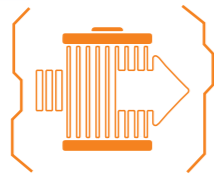
**SILENT OPERATION**

Cools super silently with noise levels as low as 29 dB(A).



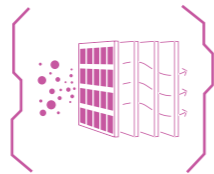
**ECO MODE**

Optimizes the power consumption & saves on your electricity bills.



**ANTIMICROBIAL AIR FILTRATION**

It kills microbes which includes germs, bacteria and fungi.



**5 STAGE FILTRATION ADVANTAGE**

Removes allergens, odours & other harmful particles.

### Technical Specifications For Split AC

FIXED SPEED, COOLING ONLY, R410A		VST18CR-DR23		VST24CR-DR23		VST30CR-DR23		VST36CR-DR23			
Power supply		1Ph / 220-240V/50Hz		1Ph / 220-240V/50Hz		1Ph / 220-240V/50Hz		1Ph / 220-240V/50Hz			
		T1	T3	T1	T3	T1	T3	T1	T3		
Cooling	Capacity	18000	16100	22800	20300	28000	24000	31000	27600		
	Input	5280	4700	6680	5950	8200	7000	9090	8090		
	Rated current	1550	1910	1950	2400	2370	2800	2650	3250		
	EER (W/W)	6.88	8.47	8.65	10.65	10.51	12.42	11.76	14.42		
	EER (Btu/W)	3.41	2.46	3.43	2.48	3.46	2.50	3.43	2.49		
	EER (Btu/W)	11.62	8.40	11.69	8.46	11.81	8.53	11.70	8.49		
Max. input consumption		2500		3100		3700		4200			
Max. current		11.96		14.83		17.70		20.10			
Compressor	Type	Rotary		Rotary		Rotary		Rotary			
	Brand	GMCC		GMCC		GMCC		GMCC			
	Model	ASF180V1SKP		ASG210V1SKP		ASG280V1SMP		ASQ310V1SMP			
Indoor coil	Output Power	35		65		89		/			
	Speed (Hi/Mi/Lo)	1300/1200/1100/1000/800		1000/1000/900/800		1200/1000/900/800		1300/1200/1100/1000			
	Number of row	2		2		3		3			
	Fin material	Golden-hydrophilic		Golden-hydrophilic		Golden-hydrophilic		Golden-hydrophilic			
Tube outside dia. and material		φ7, inner Grooved		φ7, inner Grooved		φ7, inner Grooved		φ7, inner Grooved			
Indoor air flow (Hi/Mi/Lo)		1150/950/800		1450/1150/1000		1800/1400/1200		1800/1400/1200			
Rated input Power (cooling/heating)		80		80		80		80			
Rated current (cooling/heating)		0.35		0.35		0.35		0.35			
Moisture Removal		2.6		2.5		2.5		2.5			
Noise level (Hi/Mi/Lo)		47/43/39		50/48/45		52/48/45		52/48/45			
Unit dimension (W*H*D)		970X310X230		1130X361X252.5		1130X361X252.5		1280X361X252			
Packing (W*H*D)		1060X402X310		1270X440X335		1270X440X335		1420X440X335			
Net weight		11.2		17.7		19.8		19.8			
Gross weight		11.6		20.4		22.5		22.5			
Outdoor unit	Outdoor fan motor	Output Power	85		50		85		85		
		Capacitor	2.5		2.5		2.5		5		
		Speed	860±30		860±30		860±30		950±30		
	Outdoor coil	Number of row	2		2		2		3		
		Fin material	Golden-hydrophilic		Golden-hydrophilic		Golden-hydrophilic		Golden-hydrophilic		
		Tube outside dia. and material		φ5, Inner Grooved		φ5, Inner Grooved		φ5, Inner Grooved		φ5, Inner Grooved	
		Noise level (Hi/Mi/Lo)	55		57		57		60		
	Unit dimension (W*H*D)		860×378×597		860×378×597		943×379×658		1003×456×810		
	Packing (W*H*D)		945×430×670		945×430×670		1026×425×750		1105×495×885		
	Net weight		36		38		44		60.7		
Gross weight		39		43		48		65.7			
Refrigerant type		R410A		R410A		R410A		R410A			
Refrigerant charge		950		1080		1350		2550			
Design pressure		4.5		4.5		4.5		4.5			
Refrigerant pipe	Liquid side	φ6		φ6		φ6		φ6			
	Gas side	φ12		φ15.88		φ15.88		φ15.88			
	Max. refrigerant pipe length	10		10		10		15			
Max. difference in level		5		5		5		10			
Operation temperature range		20°C-48°C		20°C-48°C		20°C-48°C		20°C-48°C			
Ambient temperature range		16°C-53°C		16°C-53°C		16°C-53°C		16°C-53°C			
Application area		20~40		30~55		30~55		50~75			
Qty/per 40HQ		183		159		142		101			

### Technical Specifications For Window AC

MODEL		VWT18CR-DR23	VWT24CR-DR23	
Climate type		T3	T3	
Refrigerant type		R410A	R410A	
Power supply	Ph-V-Hz	220~240V/50Hz	220~240V/50Hz	
Type		Cooling Only	Cooling Only	
Control type		Mechanical Controller	Mechanical Controller	
Cooling	Capacity	Btu/h	T1:24000/T3:20700	
	Power Input	W	T1:18000/T3:14900	
	Rated Current	A	T1:7.60/T3:2080	
	EER (Btu/W)	W/W	T1:7.6/T3:9.1	
Moisture removal	L/h	T1:10.23/T3:7.16	T1:10.21/T3:7.09	
Max. input consumption	W	1.5	2.3	
Max. current	A	2380	3120	
		12.1	13.95	
Compressor	Model	ASF190V1SFPB		
	Type	Rotary		
	Brand	GMCC		
	Capacity	Btu/h	16580	20520
	Input	W	1600	2010
	Rated current (RLA)	A	7	9.1
	Locked rotor Amp (LRA)	A	36.5	55
Refrigerant oil	ml	410	620	
Capacitor	uF	45	60	
Fan motor	Power output	watts	150	
	Capacitor	uF	8	
	Motor speed (TU)	RPM	890/780/680	
Evaporator	Number of rows	2		
	Tube pitch(a)x row pitch(b)	21*12.7		
	Fin material	Hydrophilic		
Condenser	Tube outside dia. and type	mm φ7 Innegroove tube		
	Number of rows	2		
	Tube pitch(a)x row pitch(b)	mm 19.5*11.6		
	Fin material	Hydrophilic		
Tube outside dia. and type	mm φ5 Innegroove tube			
Refrigerant type	R410A			
Indoor Fan	dia.*length	mm 216*100		
Indoor air flow	m3/h	750/690/640		
Indoor Noise level	dB(A)	57/55/53		
Outdoor Fan	dia.*length	mm 398*118		
Outdoor air flow	m3/h	1350		
Outdoor Noise level	dB(A)	67		
Unit dimension (W*H*D)	mm	660×676×428		
Packing (W*H*D)	mm	723×791×495		
Net weight	Kg	46.5		
Gross weight	Kg	50		
Stuffing qty per 40'HQ	sets	233		

\* Noise level reflects the levels in Anechoic Chamber  
 # Compressor Model are based on current month plan, depends upon availability at the time of production.  
 All above performance data are as per IS 1391 Rated conditions  
 As a continuing policy of product innovation, the design and specification are subjected to change without prior notice