

# PHILIPS

## Series 9000

### All-in-One Trimmer

The ultimate grooming kit

20in1: face, head & body

Precision trimming comb

Unique OneBlade technology



MG9553/15



## Stainless steel precision

Precise trim, sharp edges and convenient shave

Craft your personal look with this ultimate grooming set for face, head and body. This combination of our most advanced stainless steel trimmer and OneBlade offers ultimate precision trimming and styling to achieve the style you want.

#### Ultimate precision: even trim and sharp edges

- Even trim in one pass
- A trimmer that adjusts to your beard
- OneBlade for clean lines and sharp edges
- Long lasting performance for precise results

#### Versatile styling for face, head and body

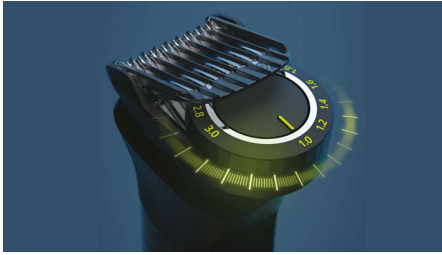
- Ultimate styling for face, head & body
- Ultimate precision grooming set
- Say goodbye to body hair
- 30% faster hair trimming\*\*
- Trim eyebrows easily and comfortably

#### Quality & Ease of use

- Trimmer runs 4 weeks on a single charge\*
- Water-resistant for convenient use and easy cleaning
- Always know when it's time to charge

# Highlights

## Precision trimming comb



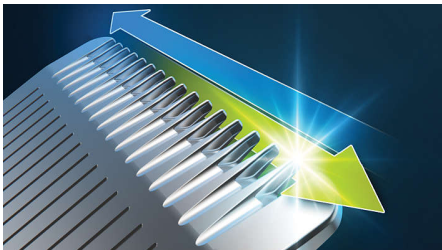
The patented trimming comb offers 11 length settings between 1-3 mm, so you can achieve an even trim at the exact length you want.

## Unique OneBlade technology



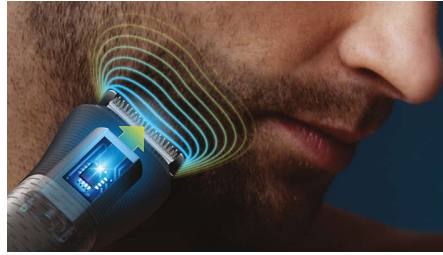
Fast moving cutter (6000x per minute) powers through even the longest hair, with glide coating and rounded tips to protect your skin, so you can comfortably style and shave your beard. Clean up cheeks, chin and neck to shape your beard precisely.

## Self-sharpening steel blades



The trimmer's stainless steel blades remain sharp as day one for long lasting performance. No oil required.

## BeardSense technology



The trimmer scans the beard density 125x per second and boosts power exactly when you need it to tackle also dense, bushy or longer beards.

## 20in1 grooming set



This complete grooming set is composed in a way that it perfectly complements your grooming routine: The durable trimmer is crafted to deliver a precise and powerful trim for facial, head and body hair while OneBlade and its unique technology is ideal to style and shave any length of hair on face.

## Precision beard styling (IVP w. detailer)



This grooming set with its multi-comb set offers 27 length settings from 0.2 to 20 mm in up to 0.2 mm precision steps for an even trim on shorter and longer beard styles. The narrow design of the precision trimmer attachment makes it ideal to style the small details around the mouth. For the perfect beard, edge your

style precisely with OneBlade. The dual-sided blade shaves in either direction and protects your skin while shaving cheeks, chin or neck.

## Comfortable body grooming



Shave comfortably below the neck with our body shaver attachment. A unique skin-protection system guards sensitive areas while you shave as close as 0.5 mm. You can also trim body hair with the two click-on combs.

## Fast hair clipping



Hair clipping is 30% faster\*\* thanks to an extra-wide 41 mm stainless steel hair clipper that cuts more with every stroke. Create your hairstyle with length settings with the 4, 9, 12 and 16 mm extra-wide hair combs.

## Eyebrow trimming



Easily keep your eyebrows neat and tidy with the dedicated eyebrow comb.

# Specifications

## Power

**Run time:** Up to 120 minutes (trimmer), Up to 30 minutes (OneBlade)

**Charging:** 60 minutes (trimmer), 8 hours (OneBlade), 5-minutes quick charge (trimmer)

**Battery type:** Lithium-Ion (trimmer), NiMH (OneBlade)

**Charging method:** USB-A (no adapter included)

**Maximum power consumption:** 5 W

**Input Voltage:** 5 V

## Design

**Handle:** Ergonomic rubber grip

## Consumer Trade Item

**Height:** 23

**Width:** 19

**Length:** 7

**Net Weight:** 0.471

**Gross Weight:** 0.642

**GTIN:** 8720689021357

**Country of origin:** ID

**Harmonized system code:** 85101000

## Outer Carton

**Height:** 20.5

**Width:** 29.1

**Length:** 23.9

**Net Weight:** 1.884

**Gross Weight:** 2.773

**GTIN:** 18720689021354

## Service

**2-year warranty**

## Other

**Height:** 123

**Width:** 71

**Length:** 116.4

**GTIN:** 68720689021359

## Ease of use

**Maintenance free:** No blade oil required

**Display:** Battery low indicator (trimmer), Battery full indicator (trimmer), Battery charging indicator (trimmer & OneBlade)

**Wet & Dry:** 100% shower proof

**Operation:** Cordless use only

## Versatile styling

**Styling tools:** Steel trimmer, Steel precision trimmer, Body shaver with skin protector, OneBlade handle, OneBlade blade, Extra-wide hair trimmer, Precision trimming comb, 3-7 mm adjustable comb, 9-13 mm adjustable comb, 16-20 mm adjustable comb, 2 body combs, Eyebrow comb, 2 wide fading hair combs, 4 wide hair combs

**Accessories:** Large soft pouch with zipper, Cleaning brush, USB-A (adapter not included), OneBlade blade protection cap

**# of attachments:** 20

## Precise trim

**Cutting performance:** Self-sharpening steel blades, BeardSense technology, OneBlade technology

**Precision trimming:** Precision trimming comb

**Length settings:** 27 (0.2 - 20 mm)

**Precision steps:** Up to 0.2 mm

