

PHILIPS

Airstyler

7000 Series

Rotating Volumebrush

Ionic & Tourmaline

2 attachments



BHA710/13



Versatile styling for smooth and shiny hair

Philips Rotating Volumebrush with 2 attachments

Use Philips Dynamic Volumebrush to create different styles, while keeping hair smooth and shiny. Its 50mm rotating natural bristle brush adds volume and movement while the retractable brush creates defined waves without tangles.

Protects your style, cares for your hair

- 50mm brush for smoother, shinier results
- Care+ setting for better protection while drying and styling

Ultimate shine and condition

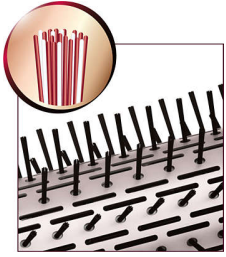
- Ionic conditioning prevents frizz, maximizes shine
- Tourmaline ceramic adds more shine to your hair

Volume, body and waves without tangles

- 1000W power for beautiful results
- 50mm round brush adds volume and movement
- 30mm retractable brush for tangle free styling
- The brushes can be rotated in both directions

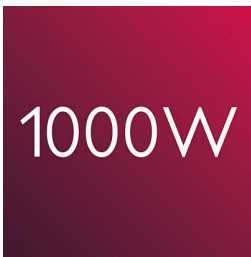
Highlights

Natural bristles



The bristles of the ThermoBrush move through the hair more smoothly, reducing static, increasing shine and preventing tangles.

1000W power



This 1000W airstyler creates the optimum level of airflow and gentle drying power, for beautiful results every day.

Ionic care



Ionic conditioning dries hair without building up static. Negatively charged ions are released, reducing frizz, smoothing down the hair's

cuticles and intensifying hair's shine and glossiness. The result is shiny, frizz-free hair that looks its best.

Tourmaline ceramic coating



The styler's unique tourmaline ceramic coating protects and revitalizes hair while you style. This special coating conducts heat effectively with no hot spots and adds shine with every stroke.

50mm round brush



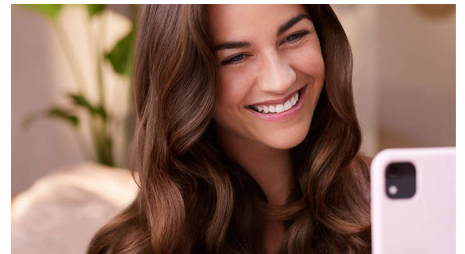
The 50mm thermo brush is the perfect way to add volume, body and shine to your hair. Use on nearly-dry hair to create a beautiful salon blow dry at home.

30mm retractable brush



Use the 30mm brush to add defined waves while keeping hair smooth and shiny. Its retractable bristles make it easy to style without tangles.

Care+ setting



The 'Care+' setting ensures the optimum drying temperature and guards against overheating. Hair still dries fast, with the same powerful airflow but at a constant, caring temperature.

Two way rotation



The brush can be rotated in both directions, making it easy to handle and create a variety of styles.

Specifications

Technical specifications

Cord length: 1.8 m

Voltage: 220-240 V

Color/finishing: Silk white with Oyster metallic

Wattage: 1000 W

Features

Hanging loop

Swivel cord

Ionic conditioning

Rotating setting: 2 rotating speed settings

Settings: Heat settings: 3, Speed setting: 2

Tourmaline ceramic coating

Attachments

Retractable bristle brush: 30mm

Natural mixed bristle brush: 50mm

Brush cap: for 50mm round brush

Service

2-year guarantee

