

# PHILIPS

## Pro Hairdryer

### DryCare

Powerful AC motor

2200 W drying power

High air speed up to 130 km/h  
(99 mph)\*

2 x more ions\*\* for shiny hair



BHD274/03



## Fast and powerful drying for professional results

Philips Pro hairdryer has a professional AC motor that reaches up to 130 km/h\* of air speed for fast and professional results. It also features the ThermoProtect setting for optimal temperature to protect from overheating.

### Fast drying experience

- Fast drying, powerful AC motor
- 2200 W of fast, high-performance drying power

### Less hair damage

- ThermoProtect temperature setting
- 2 x more ions\*\* for shiny, frizz-free hair

### Professional salon-style results

- Six speed and heat settings for optimal control
- Cool Shot sets your style
- 9 mm concentrator for focused airflow, great for styling
- Volume diffuser enhances volume, for curls and bouncy styles

# Highlights

## Powerful AC motor

Philips Pro hairdryer has a high performance AC motor developed for the professional market. It generates up to 130 km/h\* of air speed for fast and effective results.

## 2200 W of power



This 2200 W Pro hairdryer creates a powerful airflow. The resulting combination of power and speed makes your drying and styling experience quicker and easier.

## ThermoProtect temperature



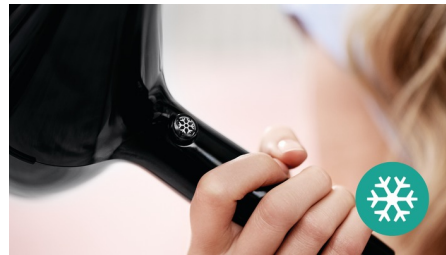
The ThermoProtect temperature setting provides the optimal drying temperature and gives additional protection from overheating the hair. With the same powerful airflow, you will get the best results while caring for your hair.

## 2 x more ions\*\*



Charged negative ions eliminate static, condition the hair and smooth down the hair cuticles to intensify the hair's shine and glossiness. The result is smooth, frizz-free hair with vibrant shine. Ionic care comes from an advanced ioniser that releases two times more ions\*\* compared to a standard ioniser, enabling every strand of hair to be cared for from all angles.

## Cool Shot



A must-have professional function, the Cool Shot button provides an intense burst of cold air. It is used after styling to finish and set the style.

## Accurate control



The speed and heat required can be easily adjusted to create the perfect style. Six different settings ensure optimal control for precise and tailored styling.

## 9 mm narrow concentrator



The 9 mm opening of the concentrator focuses the flow of air for precision styling on specific areas. The ideal attachment for brushing while drying and styling.

## Volume diffuser



The volume diffuser spreads the flow of air across the hair, boosting volume and reducing frizz while drying. For best results, hold the diffuser close to the crown and root area. The diffuser's fine textured pins will add volume, maximise thickness and bounce and help to shape curls.

# Specifications

## Technical specifications

Voltage: 220 V

Frequency: 50–60 Hz

Wattage: 2200 W

Power: 2200 W

Cord length: 2 m

Motor: AC

Drying speed: up to 130 km/h (99 mph)\*

## Caring technologies

ThermoProtect setting

Ionic Care: 2 x ions

## Features

Heat/Speed settings: 6

Cool shot

Storage hook

## Attachments

Nozzle: 9 mm

## Accessories

Attachments: Volume diffuser

## Service

2 year guarantee

